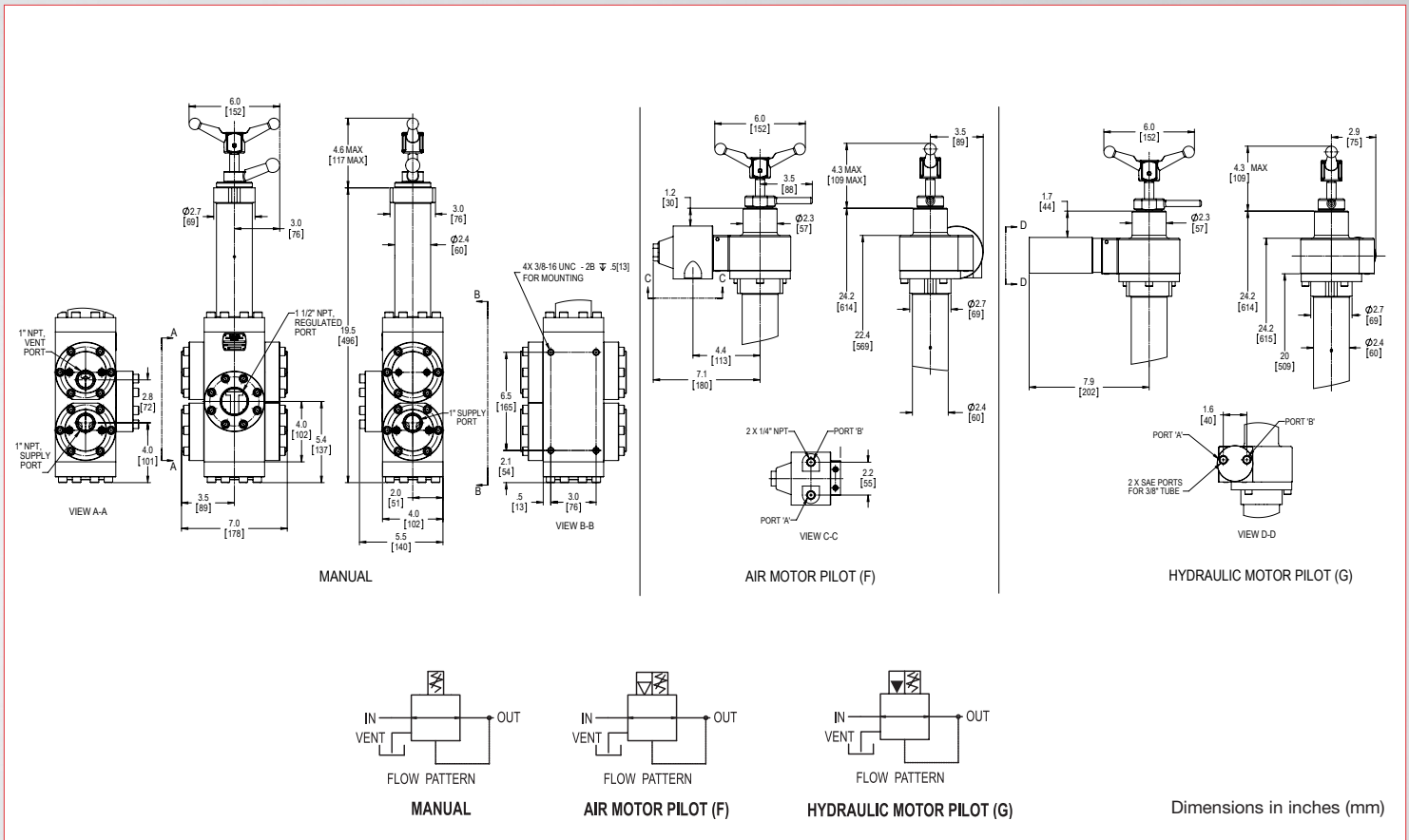


1-1/2" Land Pressure Regulator

Series L20517

Technical Drawings



Product Configurator

Example: L 20517S6HQ2

L Land pressure regulator

Option

- Blank NPT porting
- MS SAE porting

Adjustment Method

Blank	Manual
F	Pneumatic motor
G	Hydraulic motor

Regulated Pressure Range

		Inlet Pressure	Regulated Range
Blank	High sensitivity	3000 psi	300 - 1600 psi (21 - 110 bar)
		5000 psi	500 - 1600 psi (34 - 110 bar)
-1	Full range	3000 psi	300 - 2800 psi (21 - 193 bar)
		5000 psi	500 - 3000 psi (34 - 207 bar)

Series

20517S6HQ2 1-1/2" Land pressure regulator